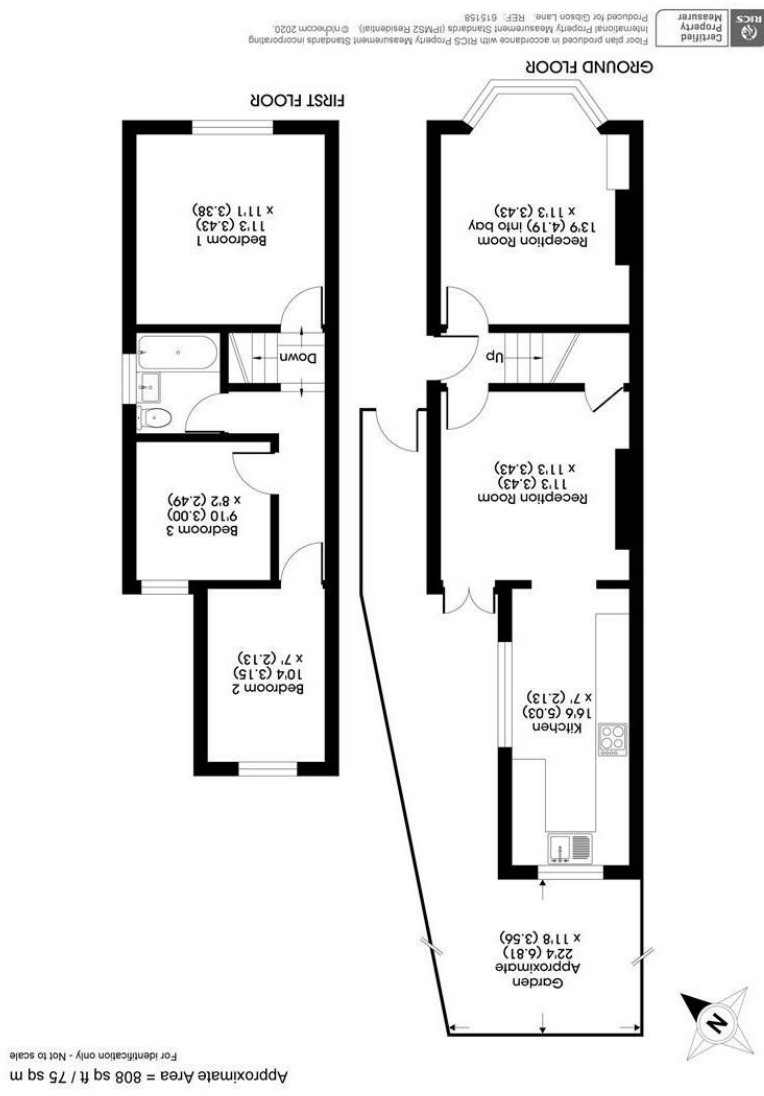
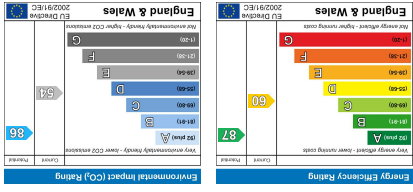


All appliances listed in these details are only 'as seen' and have not been tested by Gibson Lane, nor have we sought certification of warranty or service, unless otherwise stated. Measurements, areas and distances are approximate. Floor plans and photographs are for guidance purposes only and must not be relied upon for any purpose. These details are offered on the understanding that all negotiations are made through this company. Neither these particulars, nor verbal representations, form part of any offer or contract, and their accuracy cannot be guaranteed.



34 Richmond Road
 Kingston upon Thames
 Surrey
 KT2 5ED
 www.gibsonlane.co.uk
 Tel: 020 8546 5444





Bonner Hill Road
 Kingston Upon Thames KT1 3EP



Bonner Hill Road

Kingston Upon Thames KT1 3EP

Asking Price £625,000

A delightful three bedroom Victorian semi detached house situated in this sought after residential road in Kingston.

Description

A delightful three bedroom Victorian semi detached house situated in this sought after residential road in Kingston. The property is well presented internally with accommodation in excess of 800 sq ft arranged over two floors. The ground floor is in a traditional layout with stunning front reception room with large bay window, original fireplace and wooden flooring, going onto a dining room opened up to a modern fully fitted kitchen with patio doors leading directly onto a low maintenance south west facing rear garden. To the upper floor there are three bedrooms and family bathroom.

Situation

Bonner Hill Road is conveniently situated approximately 1/3 mile from Kingston Town Centre with its extensive range of shops, bars, restaurants and station. Fairfield Recreation Park offering its many acres of open space is moments away and the River Thames is close by. The standard of schooling in the area is excellent within both the private and state sectors.

Tenure: Freehold
Local Authority:

